

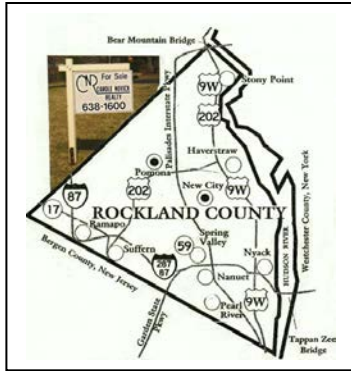


# CAROLE NOVICK REALTY, INC.



6 CHAMBERLAIN COURT  
 POMONA, NEW YORK 10970  
 Carole@CaroleNovickRealty.com

(845) 638-1600  
 (845) 362-1120  
 www.CaroleNovickRealty.com

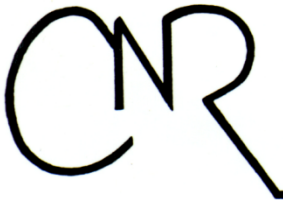


## Pomona, NY 10970 4.57 Acres.

<b>Style:</b>	Acreage	<b>Zoning:</b>	RR-80
<b>Services:</b>	Well needed	<b>Projected Closing:</b>	To agree
<b>Sewer/Septic:</b>	Septic needed	<b>Taxes:</b>	\$8044.22 (1-2019)
<b>Existing:</b>	Foundation	<b>School District:</b>	East Ramapo
<b>Heating:</b>	Oil	<b>Elementary:</b>	Grandview/Lime Kiln
<b>Property Size:</b>	4.57 acres	<b>Middle:</b>	Pomona
<b>Wooded:</b>	Yes	<b>High:</b>	Ramapo

- Tranquil setting.
  - Parkland retreat.
  - Abuts Harriman State Park.
  - Two streams offer waterfalls.
  - Ponds can be created on this site too.
  - Access to hiking trails.
  - Wooded acreage offers privacy.
  - Convenient to Parkway, NYC express bus and train.
  - Potential to subdivide into two building lots.
  - Quiet area...not a through street.
  - Existing foundation can save costs.
  - Well & septic needed.
  - RR-80 zoning.
- Contact Carole Novick Realty, Inc. for full details.

View all listings at our web site  
**C NOVICK FOR ALL YOUR REAL ESTATE NEEDS!**  
 Offering Real Estate since 1977  
*Information deemed reliable but not guaranteed*

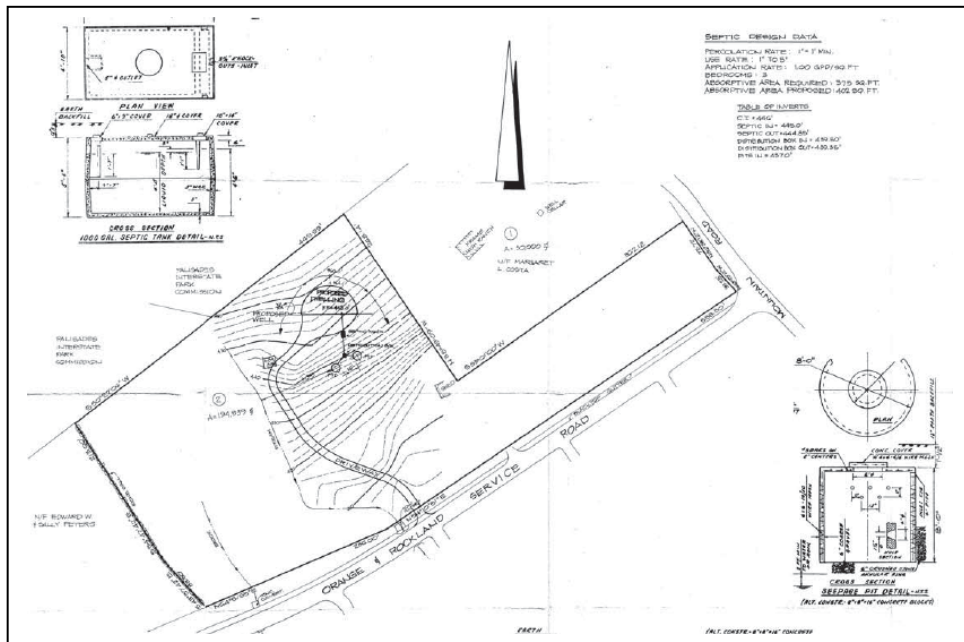
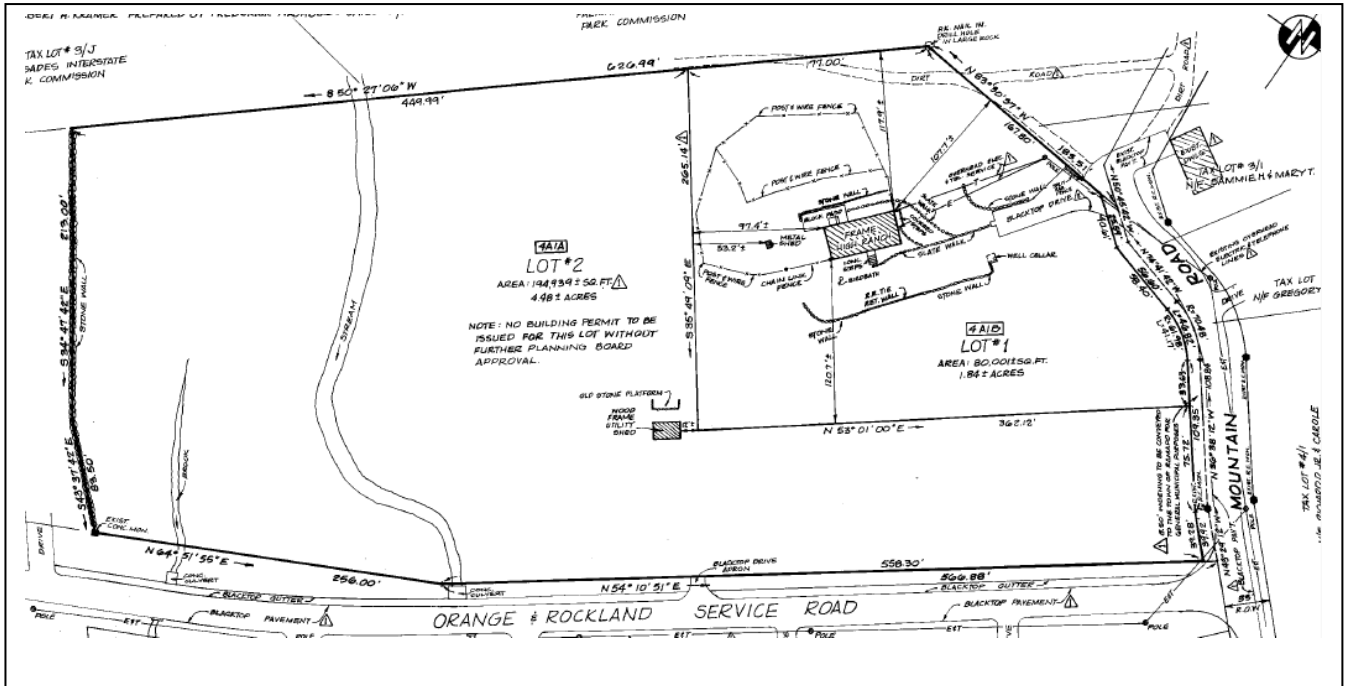


# CAROLE NOVICK REALTY, INC.

6 CHAMBERLAIN COURT  
POMONA, NEW YORK 10970  
Carole@CaroleNovickRealty.com

(845) 638-1600  
(845) 362-1120  
www.CaroleNovickRealty.com

47 Mountain Road Survey  
Pomona, NY 10970



View all listings at our web site  
**C NOVICK FOR ALL YOUR REAL ESTATE NEEDS!**  
Offering Real Estate since 1977  
Information deemed reliable but not guaranteed.