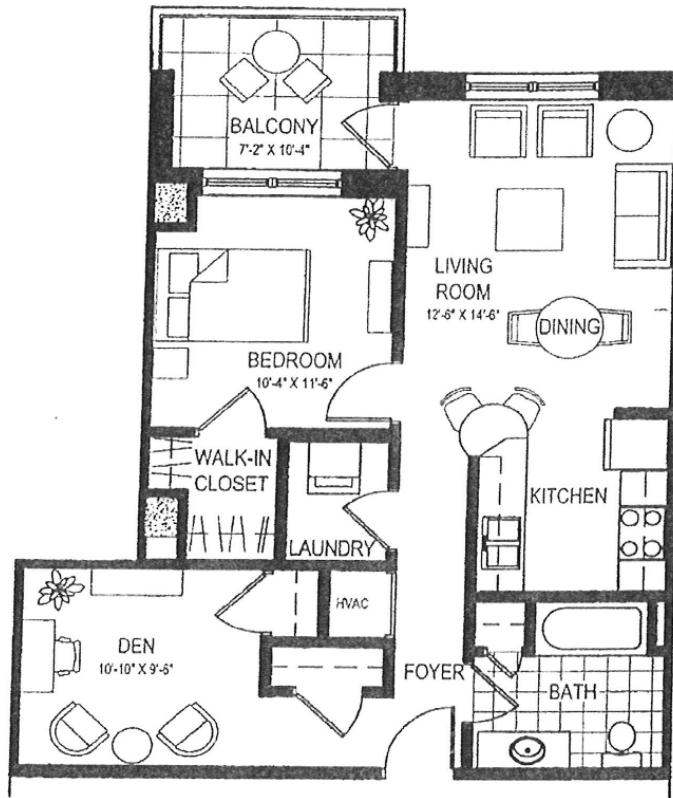


METROPOLITAN PLACE *Phase II*



INTERIOR 807 SF
TERRACE 84 SF

Contact **DINES** INCORPORATED for more information
(608) 268-0899

ALL DIMENSIONS ARE APPROXIMATE. PRICES, PLANS AND TERMS ARE SUBJECT TO CHANGE TO CHANGE WITHOUT NOTICE.

333 W. Mifflin Street | Madison, WI 53703