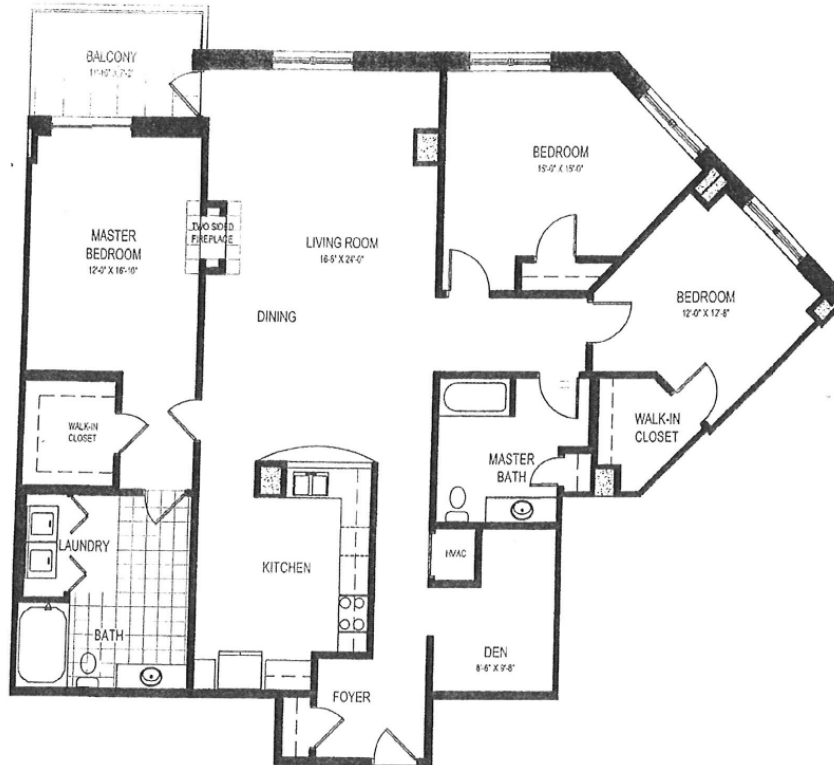


# METROPOLITAN PLACE *Phase II*



INTERIOR 2079 SF  
TERRACE 99 SF

Contact **DINES INCORPORATED** for more information  
**(608) 268-0899**

ALL DIMENSIONS ARE APPROXIMATE. PRICES, PLANS AND TERMS ARE SUBJECT TO CHANGE TO CHANGE WITHOUT NOTICE.

**333 W. Mifflin Street | Madison, WI 53703**