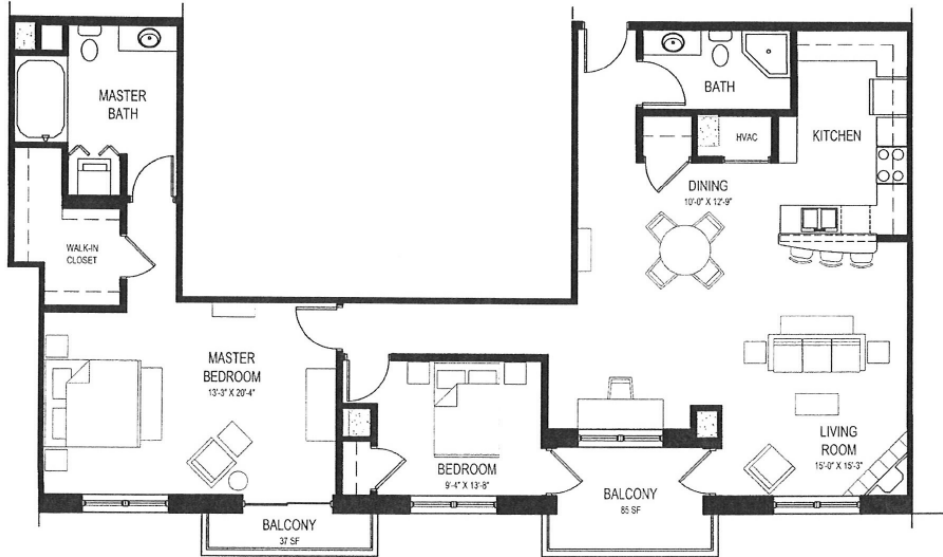


METROPOLITAN PLACE *Phase II*



INTERIOR 1450 SF
TERRACE 146 SF

Contact **DINES INCORPORATED** for more information
(608) 268-0899

ALL DIMENSIONS ARE APPROXIMATE. PRICES, PLANS AND TERMS ARE SUBJECT TO CHANGE TO CHANGE WITHOUT NOTICE.

333 W. Mifflin Street | Madison, WI 53703