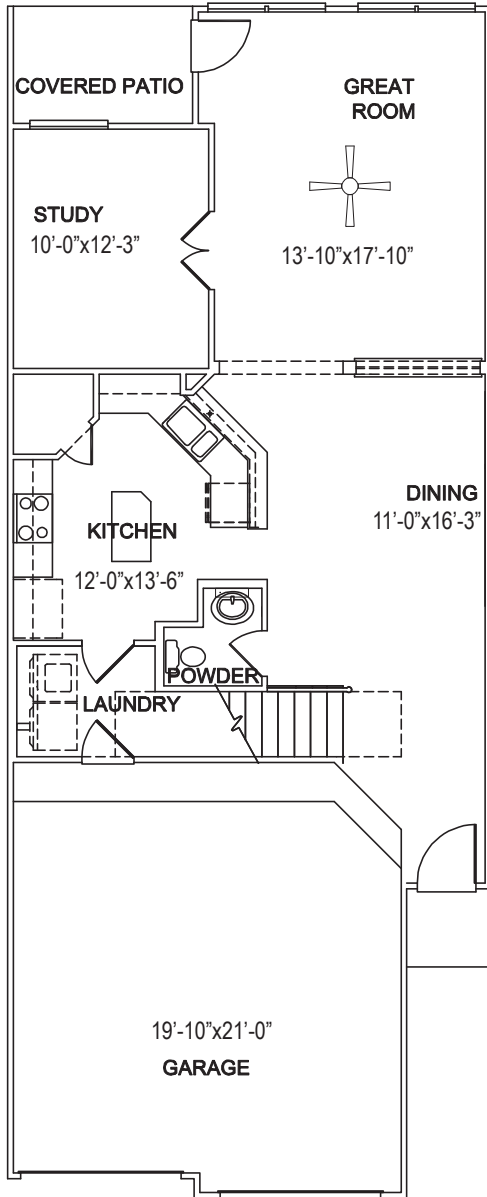


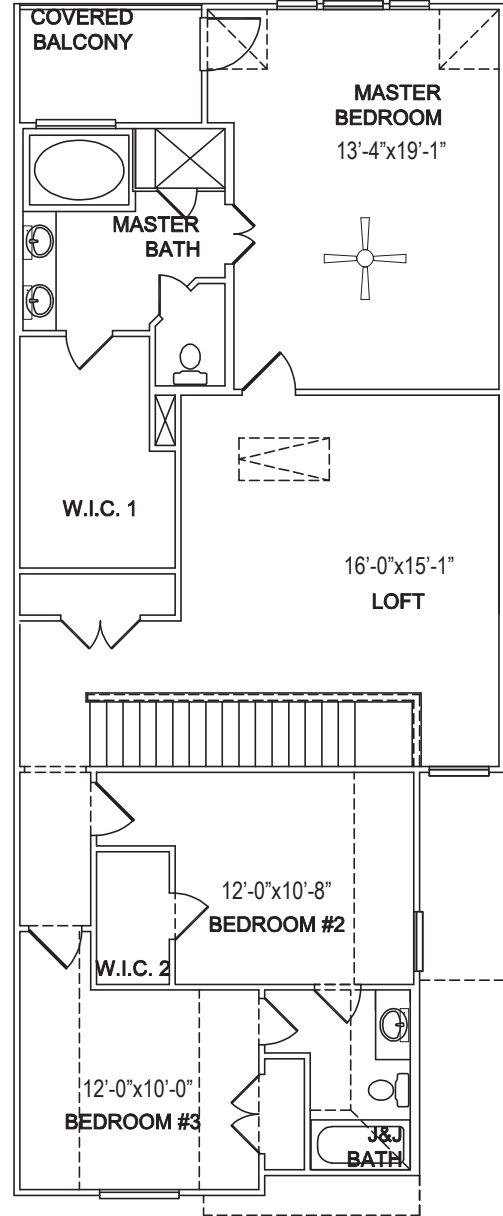


PROMINENCE HOMES-VISTAS, LLC.

GIJON



FIRST FLOOR



SECOND FLOOR

2,178 SQUARE FEET
3 BEDROOMS
2.5 BATHROOMS
TWO STORIES

*Square footage is approximate. Floorplans may vary slightly by elevation. Subject to change without notice.
Optional features listed are available at additional cost.*

WWW.PROMINENCEHOMESTEXAS.COM
1120 CAPITAL OF TEXAS HIGHWAY SOUTH, SUITE II-105, AUSTIN TX 78746



02/26/2011